

KD-Validated Anti-USO1 Vesicle Transport Factor Rabbit Monoclonal Antibody
Rabbit monoclonal antibody
Catalog # AGI1760**Specification****KD-Validated Anti-USO1 Vesicle Transport Factor Rabbit Monoclonal Antibody - Product Information**

Application	WB, FC, ICC
Primary Accession	O60763
Reactivity	Rat, Human, Mouse
Clonality	Monoclonal
Isotype	Rabbit IgG
Calculated MW	Predicted, 108 kDa , observed , 108 kDa
Gene Name	KDa
Aliases	USO1 USO1; USO1 Vesicle Transport Factor; TAP; VDP; P115; General Vesicular Transport Factor P115; Transcytosis Associated Protein; USO1 Homolog, Vesicle Docking Protein (Yeast); USO1 Vesicle Docking Protein Homolog (Yeast); USO1 Vesicle Docking Protein Homolog; Transcytosis-Associated Protein; Vesicle Docking Protein P115; Vesicle Docking Protein; Vesicle-Docking Protein; Protein USO1 Homolog
Immunogen	A synthesized peptide derived from human USO1

KD-Validated Anti-USO1 Vesicle Transport Factor Rabbit Monoclonal Antibody - Additional Information

Gene ID	8615
Other Names	
General vesicular transport factor p115, Protein USO1 homolog, Transcytosis-associated protein, TAP, Vesicle-docking protein, USO1, VDP	

KD-Validated Anti-USO1 Vesicle Transport Factor Rabbit Monoclonal Antibody - Protein Information**Name** USO1**Synonyms** VDP**Function**

General vesicular transport factor required for intercisternal transport in the Golgi stack; it is required for transcytotic fusion and/or subsequent binding of the vesicles to the target membrane. May well act as a vesicular anchor by interacting with the target membrane and holding the

vesicular and target membranes in proximity.

Cellular Location

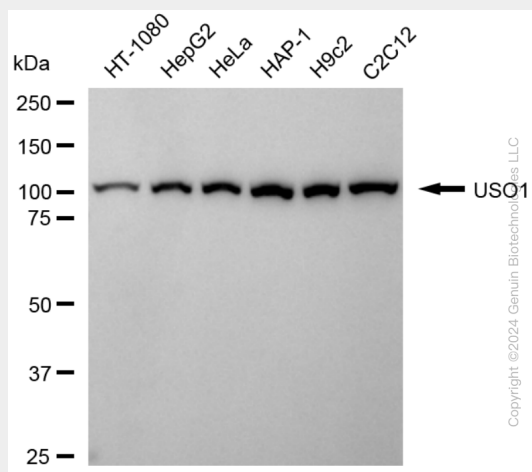
Cytoplasm, cytosol. Golgi apparatus membrane; Peripheral membrane protein. Note=Recycles between the cytosol and the Golgi apparatus during interphase. During interphase, the phosphorylated form is found exclusively in cytosol; the unphosphorylated form is associated with Golgi apparatus membranes

KD-Validated Anti-USO1 Vesicle Transport Factor Rabbit Monoclonal Antibody - Protocols

Provided below are standard protocols that you may find useful for product applications.

- [Western Blot](#)
- [Blocking Peptides](#)
- [Dot Blot](#)
- [Immunohistochemistry](#)
- [Immunofluorescence](#)
- [Immunoprecipitation](#)
- [Flow Cytometry](#)
- [Cell Culture](#)

KD-Validated Anti-USO1 Vesicle Transport Factor Rabbit Monoclonal Antibody - Images



Western blotting analysis using anti-USO1 antibody (Cat#AGI1760). Total cell lysates (30 µg) from various cell lines were loaded and separated by SDS-PAGE. The blot was incubated with anti-USO1 antibody (Cat#AGI1760, 1:5,000) and HRP-conjugated goat anti-rabbit secondary antibody respectively.

